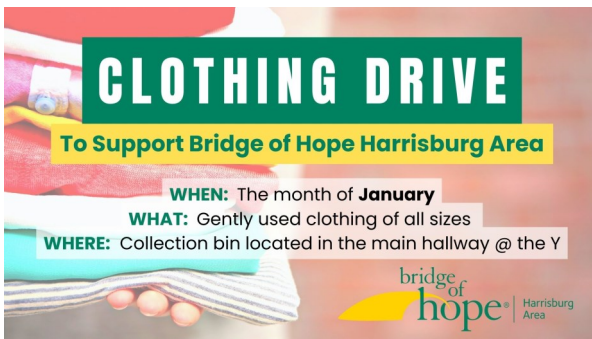




## Coffee & Dessert Reception

After service in the Activities Center

Ed & Maggie are moving to Arizona! After finishing his two-year church planting residency here at LHC, Ed has secured a job near his target area. If you would like to contribute toward their moving expenses, please mark your check or give online under the category "Mejias - Moving Expenses."



Bring clothes in a closed/sealed bag or box to Church each Sunday or anytime the Y is open for the month of January.

Bridge of Hope Harrisburg Area receives an average of \$35,000 from CommunityAid each year. That funding supports the work Bridge of Hope Harrisburg Area does to permanently end homelessness for single mothers and their children in our community. When you donate clothing to CommunityAid using Bridge of Hope Harrisburg Area's virtual bin #10256 or by dropping your clothing off, CommunityAid donates financially to Bridge of Hope Harrisburg for every pound of clothing received.

## COMMUNITY NEWS

**Offerings:** Financial gifts of worship can be placed in the black box or online on at: [www.findlivinghope.com/giving](http://www.findlivinghope.com/giving). Thank you for your faithfulness to God's work!

**Discovering Living Hope Class, 1/22:** New to LHC or want to learn more and get connected? Join us for our DLH class next Sunday 1/22 from 4-7 pm. Dinner is included, childcare available. Register online and contact Hope Whiteford with questions at [events@findlivinghope.com](mailto:events@findlivinghope.com).

**Lunch Fellowship, 2/5:** Join us after church the first Sunday in February for a meal together. This will be a potluck menu of soups, sandwiches, and sides. If you'd like to bring something, please sign up at: [findlivinghope.com/events/lunch-fellowship](http://findlivinghope.com/events/lunch-fellowship)

**Life Groups:** Looking for a great way to get connected to community in LHC? Weekly life groups are resuming this month. Grab a flyer for meeting times, locations and contact info.

**Arise & Shine Women's Bible Study:** Join us each Tuesday morning from 9:15-10:45am as we study the book of *Colossians*. Childcare is available for a small donation. For location or more info email [ariseandshine@findlivinghope.com](mailto:ariseandshine@findlivinghope.com)

**Youth Group:** Join us for youth group this weekend! We will not meet at the Y on January 28th due to Winter Meltdown.

**Blog:** Check-out our blog for weekly encouragement at [findlivinghope.com/blog](http://findlivinghope.com/blog) or subscribe to have them emailed to you. If you have an idea for an article, contact Laura Dibert at [blog@findlivinghope.com](mailto:blog@findlivinghope.com).

**Sunday Prayer:** Join us the 2<sup>nd</sup> and 4<sup>th</sup> Sunday of each month from 9-9:45am in the Community Room as we pray for the needs of our church, community, nation, and world. Join us for the whole time or just a few minutes.

**Baptism:** If you or your child has recently committed to follow Christ, the elders would love to speak with you about baptism. We are planning a baptism on February 26 for anyone who is ready.

**Summer Mission Trips:** We are planning a trip to New Mexico July 29-August 5 to serve with a mission to the Navajo people. See Jan Null for more info. We are also looking to join with a ministry in York for a week of service projects in June. See Randy Clifford for more info.



SCAN FOR MORE INFO & REGISTER FOR EVENTS

# LIVING HOPE CHURCH

FINDING HOPE IN THE LIVING GOD

## JANUARY 15, 2023

*"Therefore he is the mediator of a new covenant, so that those who are called may receive the promised eternal inheritance..."*

– Hebrews 9:15

## CHURCH OFFICE

39 E. Forrest Ave, Suite 201  
Shrewsbury, PA 17361  
717-235-6384

[pastortim@findlivinghope.com](mailto:pastortim@findlivinghope.com)  
[pastormatt@findlivinghope.com](mailto:pastormatt@findlivinghope.com)

[WWW.FINDLIVINGHOPE.COM](http://WWW.FINDLIVINGHOPE.COM)

# ORDER OF WORSHIP

- Welcome
- Call to Worship
- Praise Songs
- Community News
- Mejia Prayer & Send-Off
- Children's Dismissal
- Message
- Worship Songs
- Closing Exhortation

## NOTES



# MESSAGE

## “Mediator of a New Covenant”

*Hebrews 9:15-28*

**Series:** Draw Near to the Throne of Grace  
**Speaker:** Tim Dance

Receiving the Promised Inheritance (vs. 15-22)

Eagerly Awaiting Salvation (vs. 23-28)

# CONNECTION CARD

1/15/23

We're glad you joined us today, and we'd love to help you get connected! You can give this card to one of our greeters, drop it in the offering box, or scan the QR code and fill it out online.



- I'm a visitor & would like to know more.
- I've been attending & want to connect.

### NAME(S)

### EMAIL ADDRESS(S)

### PHONE NUMBER(S)

### I WOULD LIKE TO:

- Speak to a pastor about my faith.
- Receive a weekly email update from the church.
- Learn how to get involved in church life.
- Find out more about children or youth ministry.

### QUESTIONS, NEEDS, OR PRAYER REQUESTS?